



Lower Blackwood Catchment
Land Conservation District Committee

Regenerative Agriculture in Practice Program (RAPP) 2024



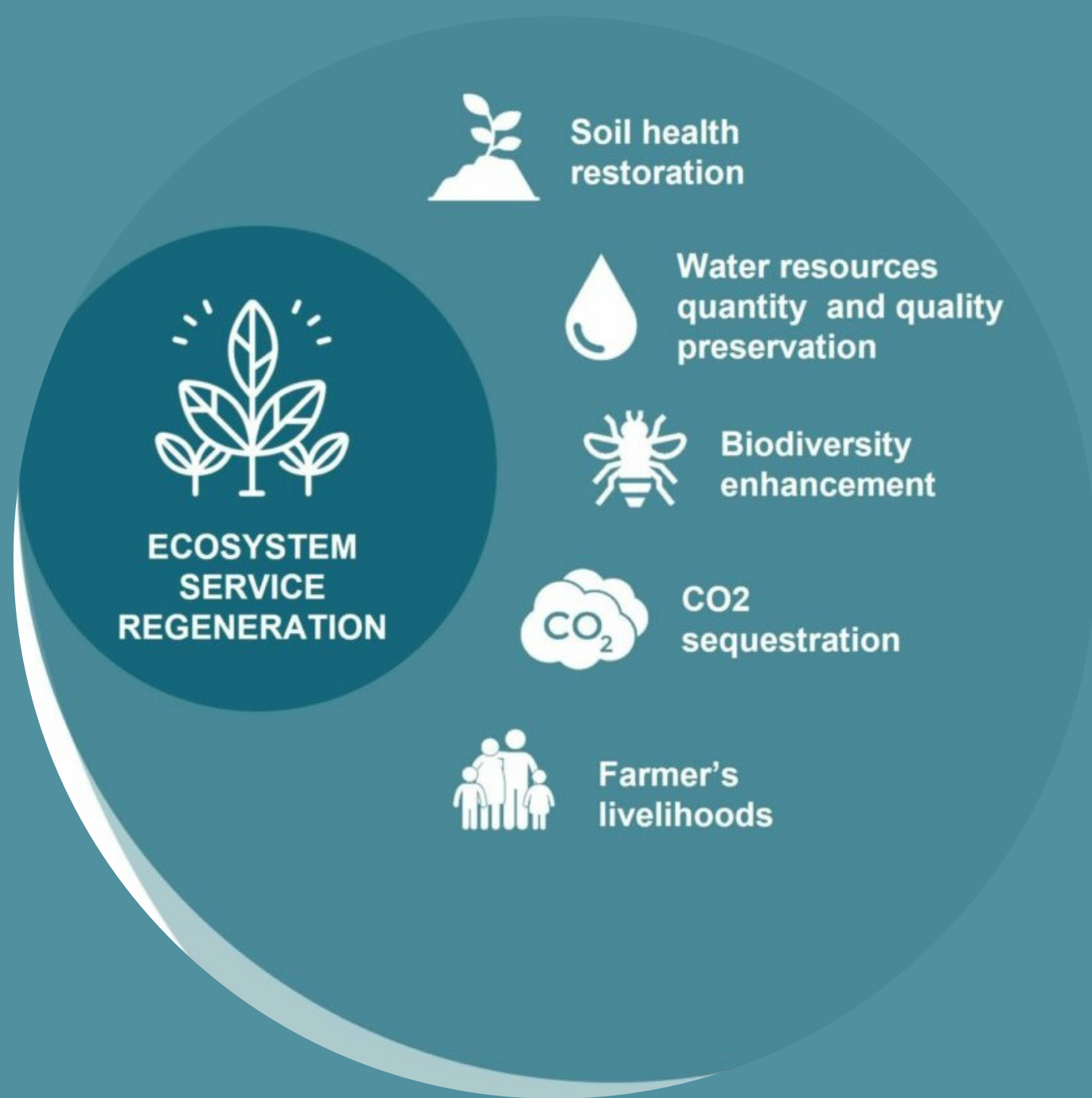
This Lower Blackwood LCDC project is supported through the Shire of Augusta Margaret River Environmental Management Fund and Soil Wise. Soil Wise is funded by the National Landcare Program Smart Farms Small Grants – an Australian Government initiative. It is supported by Healthy Estuaries WA – a State Government program. Additional support for some of the workshops & courses in the the program has been provided by Perth NRM | RegenWA



National
Landcare
Program



What is Regenerative Agriculture?



Regenerative agriculture is not a 'one size fits all' approach to farming or land management. There's also no strict rule book, but the holistic principles behind the dynamic system of regenerative agriculture are meant to restore soil and ecosystem health, and leave our land, waters, and climate in better shape for future generations.

It's important to appreciate that this is not a new idea and not all who practice these principles use the label.

Regenerative Agriculture practitioners take a broader view of their role in the world, especially in terms of soil and nutrient cycles and realize that working landscapes provide not just products but also ecosystem services like carbon sinks, water recharge, and pest & disease prevention.

Regenerative Agriculture in Practice Program (RAPP) 2024

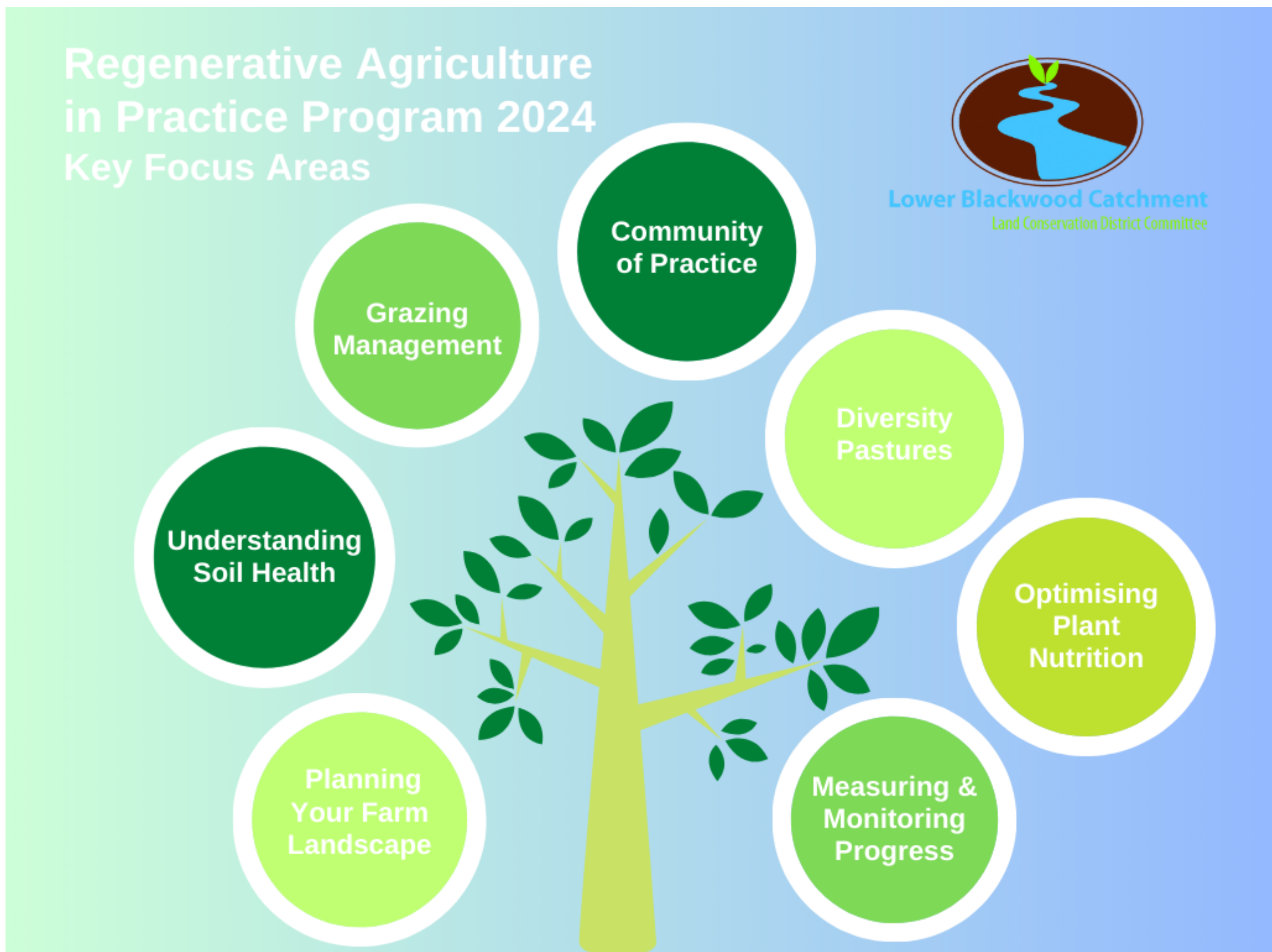
This project seeks to build knowledge, skills and capacity of land managers through a AAA engagement framework of building Awareness, providing Advice, & encouraging Adoption of regenerative agriculture practices. The 2024 program will leverage experiences & learnings gained from the last 4 years of RAPP delivery and other regenerative agriculture project works in the Lower Blackwood Catchment.

The Regenerative Agriculture in Practice Program (RAPP) 2024 places a strong focus on:

- the continued engagement and support of previous program participants (alumni);
- the importance of including participant 'partners' or other members of the enterprise team in the learning journey; and
- the importance of ongoing monitoring, recording & sharing of progress.

This focus we believe is critical to achievement of our overall goal of building a strong and effective Regenerative Agriculture Community of Practice in our region.

The Program In Summary:



Stream 1: Understanding the Fundamentals

Who can apply? RAPP 2024 Stream 1 is open to 10 grazing enterprises (2 participants/enterprise) within the Shire of Augusta Margaret River who want to take their first steps into regenerative agriculture and gain a good understanding of the fundamental principles that underpin it.

What's in the program?

- 1 x 4 day Plan Your Farm Landscape Course
- 1 x Reboot Your Soil Online Course
- 1 x Reboot Your Grazing Online Course
- Membership to Talkin' After Hours
- Priority registration for program webinars & face to face workshops.

Full details on Page 4.

Stream 2: Supporting Transition & Adoption

Who can apply? RAPP 2024 Stream 2 is open to 15 grazing enterprises (2 participants/enterprise) who already have a good grasp of the fundamental principles underpinning regenerative agriculture and are in the process of transitioning to a regenerative approach to farming. Previous RAPP program participants are encouraged to apply.

What's in the program?

- 3 x Masterclasses
- 5 x on farm peer group sessions
- 4 hours/alumni enterprise access to regen coach time.
- 1 x 12 month membership to the Soil Mentor App & Regen Platform
- Membership to Talkin' After Hours
- Priority registration for program webinars & face to face workshops

Full details on Page 6.

What else?

Community of Practice: Talkin' After Hours



The translation of the program aims from 'learning to doing' will be further supported through the development & delivery of additional 'how to' content related to regenerative agriculture, including live workshops, webinars, podcasts, & case studies.

All of the below RAPP 2024 additional activities are open to all project participants AND the wider community. All recorded and written content will be made available to participants and other land managers through the Lower Blackwood LCDC's online community & information hub 'Talkin' After Hours'

RAPP 2024 Live Workshops: -open to all program participants and the wider community. These workshops are optional and some will be an additional cost to attend.

- Optimising Plant Nutrition with Mark Tupman
- Managing Pastures with Foliar Nutrition with Joel Williams
- Make Your Own Johnson Su Bioreactor & Compost with Mark Tupman
- Make Your Own Biological Inputs with Mark Tupman

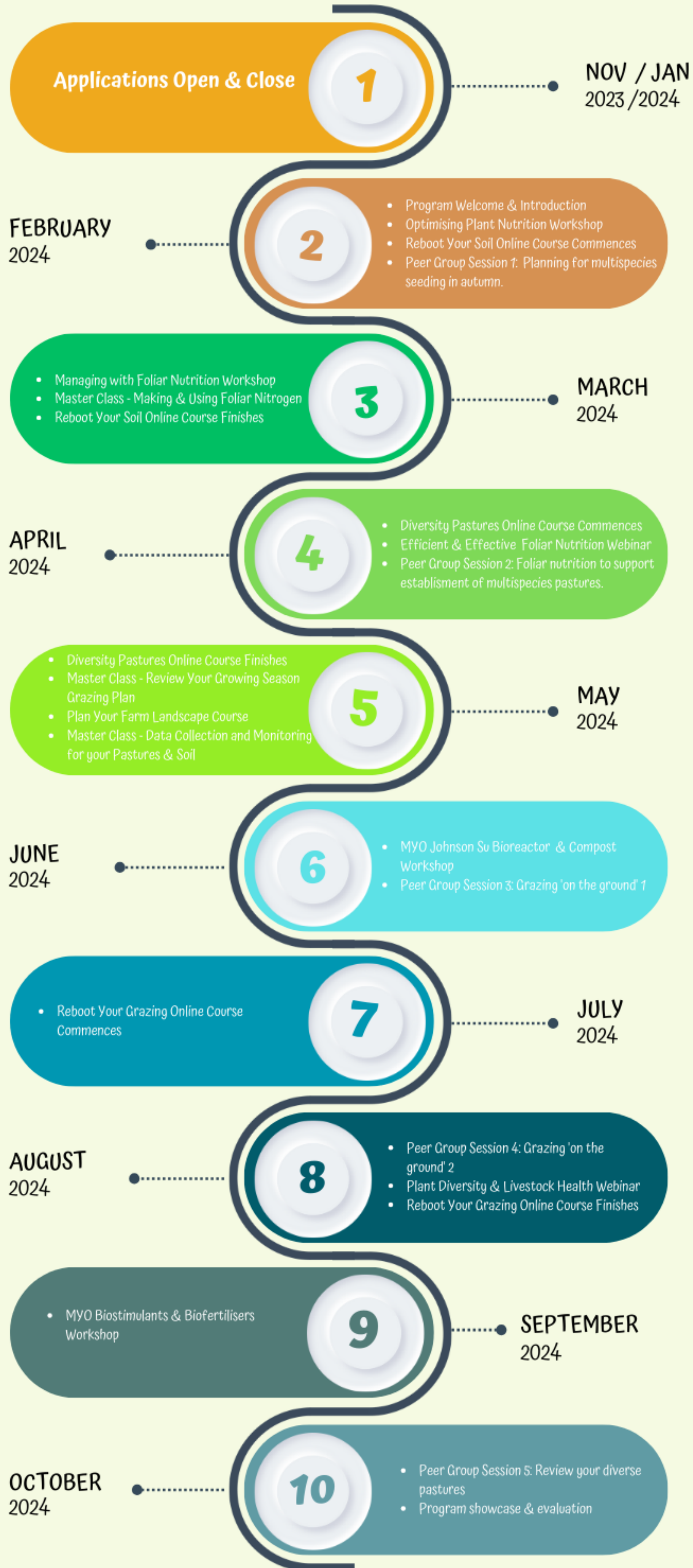
RAPP 2024 Webinars & Podcasts: - open to all program participants and the wider community

- Efficient & Effective Foliar Nutrition with Mark Tupman
- Plant Diversity & Livestock Health with Professor Fred Provenza

RAPP 2024 Additional Online Courses: - open to all program participants and the wider community. This course is optional and will be an additional cost to attend

- Diversity Pastures Online Course with David Hardwick

TIMELINE



RAPP 2024 Stream 1 – Understanding the Fundamentals



This stream is designed to give you an essential introduction to the fundamentals that underpin regenerative agriculture. This includes soil health & grazing management principles and practices, and an exploration of how rural landscapes work, culminating in you developing your own well thought out Regenerative Farm Plan.

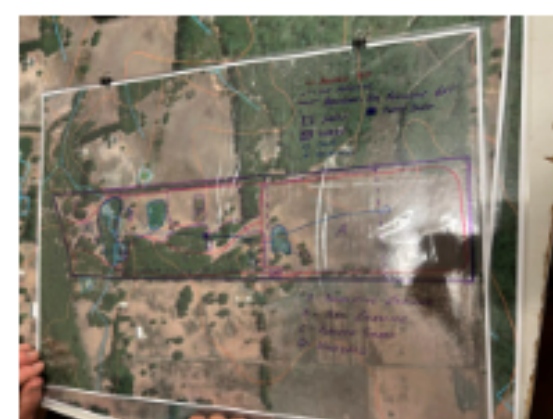
Soil Health: Reboot Your Soil Course



Presented by David Hardwick and the team from Soil Land Food, this online 6 part course Reboot Your Soil will give you a clear, holistic process to follow to develop an effective soil management plan. The course is designed to suit all farming enterprises to help farmers improve their soil management. Participants will learn how to identify soil constraints and key nutrient issues that may be holding back their enterprise.

The course consists of 6 Zoom Webinars, run once a week over 6 weeks. Each session goes for 90 minutes. Recorded sessions will be accessible for catching up via Talkin' After Hours in the RAPP private group. You will also be provided with a Soil Action Plan Worksheet to help develop a plan for your soils as you go through the webinars.

Farm Planning: Plan Your Farm Landscape Course



Presented by David Hardwick from Soil Land Food, this innovative 4 day course will show you how to design and plan a healthy, resilient and productive rural landscape for their farm business.

At the end of this course you will have the confidence to identify issues, make decisions and take action to start improving landscape health and enterprise productivity on your property. It all starts with good planning! You will develop a well thought out & whole of farm plan for your place. The course is hands on, group based and combines theory with lots of practical activities.

Grazing Management: Reboot Your Grazing



Grazing livestock are the most powerful tool we have available to regenerate land. The way grazing animals are moved across the landscape influences soil health, pasture species diversity, plant growth and production. Different species graze differently and livestock have different nutritional requirements throughout the year. Planned grazing is an approach that allows you to build soil health optimise pasture health and production while accounting for these changing needs of livestock.

In this 6 part online course, presenter and Holistic Grazing expert Dr Judi Earl, in collaboration with agroecologist David Harwick, will describe the range of approaches to grazing management and the impact of the different strategies on pasture dynamics, growth and production.

For more detail on all course content go to:

<https://lowerblackwood.com.au/rapp-2024-stream-1-understanding-the-fundamentals/>

Stream 1 Eligibility Requirements:

RAPP 2024 Stream 1 is open to 10 grazing enterprises (2 participants/enterprise) within the Shire of Augusta Margaret River who want to take their first steps into regenerative agriculture and gain a good understanding of the fundamental principles that underpin it.

- Your farm enterprise is within the Augusta Margaret River Shire boundaries.
- You are grazing or intending to graze livestock on your enterprise.
- You, or at least 1 member of your enterprise, agree to actively participate in all Stream 1 program components.
- Agree to become a member of the LCDC's Talkin' After Hours Online Community
- Agree to be included as a potential case study (a one-page profile on who you are and why you chose to be part of the program, a summary of your production system & current landscape function, your, aims, challenges & desired outcomes). The case study will be housed on the LCDC website & in program publications.

Stream 1 Fee:

The subsidised program participation fee for Stream 1 is: \$600 + GST (actual value of stream participation is \$4000 + GST).

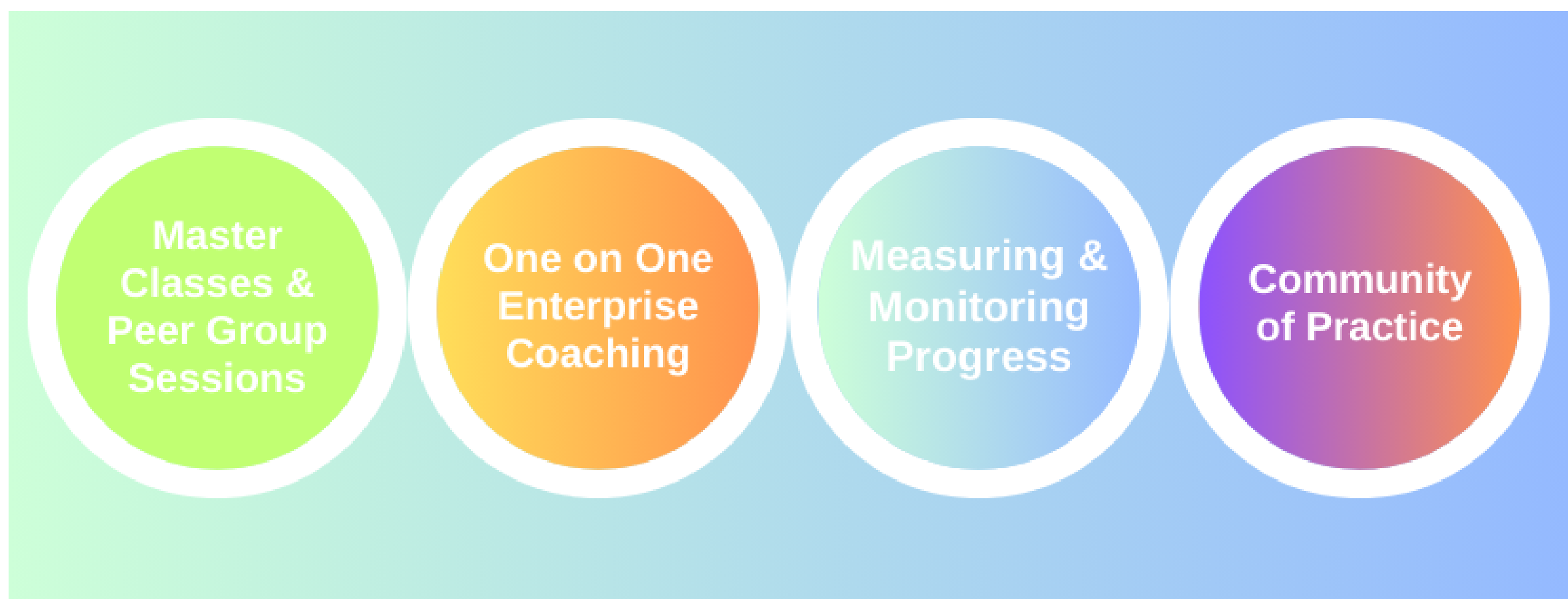
The participation fee entitles your Farm Enterprise to:

- two places in the program welcome introduction session & final showcase session
- two places in the Plan Your Farm Landscape Course,
- one enterprise login to Reboot Your Soil & Reboot Your Grazing Online Courses,
- membership to Talkin' After Hours, and
- priority registration for all additional RAPP ticketed workshops.

To apply go to <https://lowerblackwood.com.au/regenerative-agriculture-in-practice-project-rapp-2024/>

Applications close Sunday, January 14th 2024

RAPP 2024 Stream 2 – Supporting Transition & Adoption



This stream is designed to provide you the opportunity to continue to grow and develop your skills & knowledge in regenerative agriculture further, maintain and build connections, and comprehensively monitor, record & share your progress.

This stream also aims to 'grow' your opportunity to 'pay it forward' as a future mentor / influencer of other farmers looking to transition to regenerative practices.

Master Classes & Peer Group Sessions



The **Master Classes** cover topics introduced and explored in previous RAPP programs, however they are designed to provide you with the opportunity to expand your knowledge & skills further via discussion, Q & A, cause & effect analysis, and in field observation with our expert presenters.

The three program Master Classes include:

- A 1 day practical session on making & using foliar nitrogen, and planting treatments for multispecies seeding with Joel Williams & Mark Tupman
- A 'Review Your Growing Season Grazing Plan, & Grazing Management Q & A' Zoom with Dr Judi Earl
- A 1/2 day practical session on data collection and monitoring for your pastures & soil with David Hardwick.

The **Peer Group Sessions** provide an opportunity for you to share in context, information about your goals, practices & challenges. The purpose of the sessions are to share learnings, provide support for each other, measure progress, and promote commitment & accountability for your own enterprise goals achievement in relation to the program. The Peer Groups sessions will be facilitated by the program coach, Mark Tupman, on site at selected alumni properties.

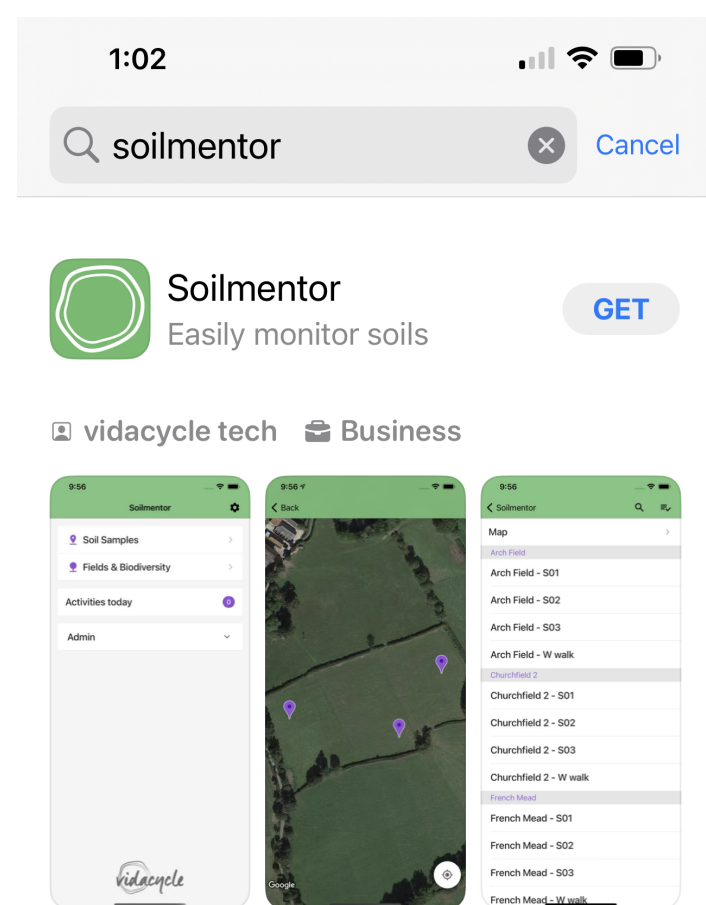
The five Peer Group Sessions will focus on:

- Peer Group Session 1: Planning for multispecies seeding in autumn.
- Peer Group Session 2: Foliar nutrition to support establishment of multispecies pastures.
- Peer Group Session 3: Grazing 'on the ground' 1.
- Peer Group Session 4: Grazing 'on the ground' 2.
- Peer Group Session 5: Review your diverse pastures.

One on One Enterprise Coaching

You will have access to 4 hours/enterprise of our program coach Mark Tupman's time. Mark's role for this component is to provide you & your enterprise support and guidance outside of the peer group sessions, on any matters related to the regenerative practices you are implementing or would like to implement as part of this program.

Measuring & Monitoring Progress



Measuring & monitoring what is happening above & below ground is critically important to understand changes that are happening on your land – this information is also vital to making informed decisions. A simple and easy method to capture, record, & report will ensure that the measuring and monitoring actually get done.

This opportunity will be provided to you via the Soil Mentor App & Regen Platform – a mobile & web dashboard for recording & benchmarking key soil health & biodiversity data. The platform has been designed by Vidacyle in collaboration with Nicole Masters and has been customised for the Lower Blackwood LCDC.

Your enterprise will have a initial 12 month membership to the platform with an option to continue your subscription at the end of the 12 months.

Find out more about the Soil Mentor App & Regen Platform at: <https://soils.vidacycle.com/>

Stream 2 Eligibility Requirements:

RAPP 2024 - Stream 2, is open to 15 grazing enterprises (2 participants/enterprise) who already have a good grasp of the fundamental principles underpinning regenerative agriculture and are in the process of transitioning to a regenerative approach to farming. Previous RAPP program participants are encouraged to apply.

- Your farm enterprise is within the Augusta Margaret River Shire boundaries.
- You are grazing or intending to graze livestock on your enterprise.
- You, or at least 1 member of your enterprise, agree to actively participate in all Stream 1 program components.
- Agree to become a member of the LCDC's Talkin' After Hours Online Community
- Agree to be included as a potential case study (a one-page profile on who you are and why you chose to be part of the program, a summary of your production system & current landscape function, your, aims, challenges & desired outcomes). The case study will be housed on the LCDC website & in program publications.

Stream 2 Fee:

The subsidised program participation fee: \$800 + GST (actual value of stream participation is \$5350 + GST). The participation fee entitles your Farm Enterprise to:

- two places in the program welcome introduction session & final showcase session
- two places in the program Masterclasses (x 3)
- two places in the program Peer Group Sessions (x 5)
- 4 hours/enterprise access to the program regen coach (Mark Tupman)
- 12 month enterprise membership to the Soil Mentor App & Regen Platform.
- membership to Talkin' After Hours
- priority registration for all additional RAPP ticketed workshops & webinars.

To apply go to <https://lowerblackwood.com.au/regenerative-agriculture-in-practice-project-rapp-2024/>

Applications close Sunday, January 14th 2024

About our Presenters & Facilitators



Mark Tupman  Productive Ecology

For over two decades Mark has been active in the fields of organic/biodynamic production, permaculture, sustainability, agro-ecology and holistic management and in between times managed an orchard, animals and food gardens on his own property.

Mark provides consultation and education & training in the establishment of integrated living production systems. In addition to his consulting work, Mark works as a project consultant to the Lower Blackwood Landcare Group and is the RAPP program coach.



David Hardwick  SOIL LAND FOOD
— ECOLOGICAL AGRICULTURE —

David is a professional agroecologist working in soil and regenerative agriculture extension and consulting all over Australia for 20 years. His focus is on regenerative and organic farming systems, land management and rural change.

David has worked in the conventional, organic and regenerative sectors and across grazing, horticulture, dairying and cropping systems. For the last 10 years he has been helping farmers and graziers all over Australia build their skills and confidence to manage soils using fun and practical activities as part of his highly successful Digging Deeper Soils Courses and Bootcamps. In 2020 he started teaching soils online!



Joel Williams  Integrated Soils

Joel is an independent plant and soil health educator providing lectures, workshops and consultation on soil management, plant nutrition and integrated approaches of sustainable food production.

He has a particular interest in designing farming systems that focus on managing soil biology along with crop & soil nutrition to optimise plant immunity and soil function. Joel has extensive practical experience in Australia, UK and Canada integrating soil and plant analyses as a joined-up strategy for managing production. Joel also has a passion for teaching and sharing both scientific and practical knowledge on agroecological growing practices and has lectured to farming audiences internationally.



Dr Judi Earl  AIMS

Judi gained her PhD in pasture ecology when she conducted the first studies describing the benefits to pasture composition from planned grazing. She has extensive experience in how grasslands and pastures respond to grazing and fertility management and is a widely respected speaker on these matters.

Establishing the AIMS consultancy in 1998 and a Holistic Management™ educator since 2002, Judi's main area of interest is working with land managers to enhance the condition and productivity of their land through improved understanding of ecosystem function and more effective utilisation of available resources.

About the Lower Blackwood Land Conservation District Committee

We are your local landcare service. We are a not-for-profit, community managed, constituted and independent land care organisation with a membership representative of landholders with an interest in sustainable agriculture, catchment management, the broader environment and river health in the Lower Blackwood catchment.

We work with farmers, land managers, local government, business and traditional owners to promote sustainable & productive agriculture, in a healthy & vibrant community. We do this through connecting people, coordinating resources, & delivering on-ground results.



Lower Blackwood Catchment
Land Conservation District Committee

**Working
towards a
healthy &
sustainable
agricultural
community**

www.lowerblackwood.com.au

Want to know more about us or our projects?

Contact us at www.lowerblackwood.com.au | E: info@lowerblackwood.com.au | T: (08) 9758 4021 | M: 0408 584 006



Lower Blackwood Catchment
Land Conservation District Committee

Want to know more about us or our projects?
Contact us at www.lowerblackwood.com.au
E: info@lowerblackwood.com.au | T: (08) 9758 4021