

Stock Smart with Stress Free Stockmanship

One day Seminar series kindly supported by:



natural resource
management program



Presented by Bruce Maynard

Ag ToolshedTM
COMMUNITY COUNTRY COMMERCE



Commitment to Community

- Desirable and Plentiful



WINNER



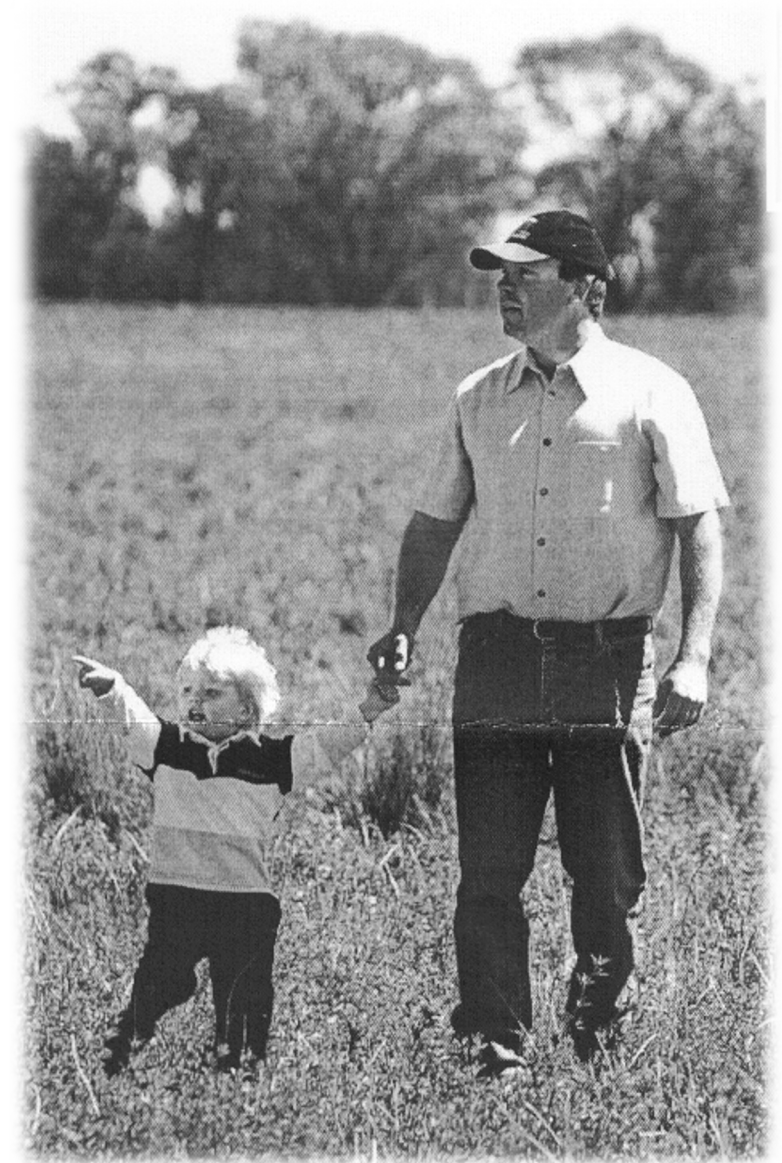
“A continuing challenge facing Australian farmers today is to integrate sustainable environmental outcomes with practical, profitable production systems. I’m humbled to accept the Bob Hawke Landcare Award for the contributions that I’ve been able to develop within rural communities with their Landcare activities.”

**MR BRUCE MAYNARD,
WINNER OF THE 2022 BOB HAWKE
LANDCARE AWARD**

Working with animals is a reason for people to choose rural communities....

“The agricultural industry swamps farmers with what to do rather than how to think.”

- “The biggest misconception about information is truth. Most information is not truth.”





Today's Themes

- **Behaviours** Boosting Businesses- increasing livestock profitability
- Lasting **Landscapes**- transforming the farmscape for the future

Livestock Yard Practical Fundamentals

- Invest the least for the most return.
 - Holding areas can be cheaper.
 - Strong and substantial working areas keep people safe and
- Try not to spend twice on working facilities.



Yard Design Fundamentals



- Invest the least for the most return.
- All sorts of designs can work- but not all work well.
- Both curved and straight yards can be useful.
- Cladding can induce panic reactions but also can limit distractions.
- Less investment is in your interest- keep it simple.
- Curved yards can induce humans to accentuate ‘predatory’ behaviours.
- Holding areas should be cheap.
- Working areas should be robust.
- Try not to spend twice on working facilities (working/outloading)

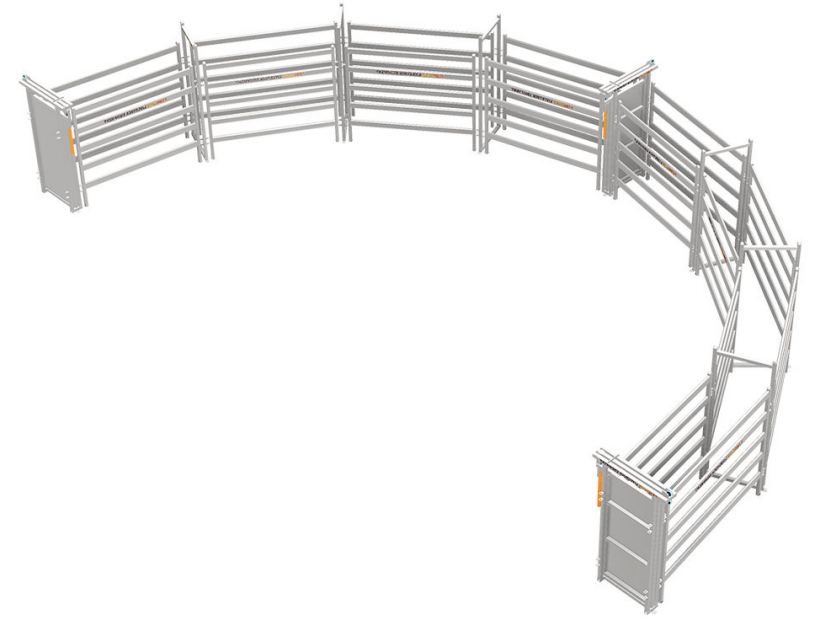
Straight Versus Curved

- Straight shapes assist animals to determine direction.
- Straight shapes assist humans to display consistent signals to animals.
- Straight shapes can be cheaper to construct.
- Photo credit: Steel Supplies Charters Towers



Curved Versus Straight

- Curves can allow animals to continue to release human pressure.
- Curves can shorten the working distance covered by handlers.
- Curves can limit the ability of handlers to show reduction of pressure to animals.



Cladding- pros and cons

- Yard designs that allow animals to observe other animals are preferred for breeder operations or where performance is the main criteria.
- Cladding is very useful at terminal sites (eg meatworks)
- Cladding or solid walls can increase isolation and not allow for variable signalling from humans.
- Cladding can be very helpful at times.



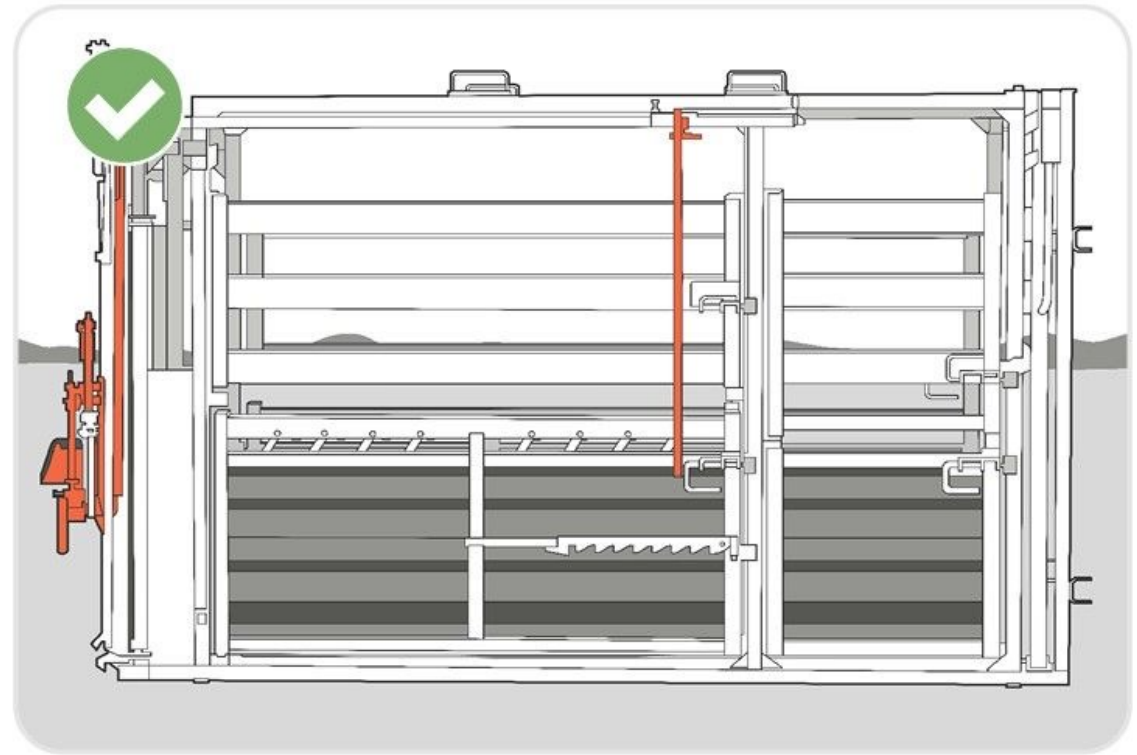
Holding areas can be cheaper

- Make the centre areas safe for people and animals.
- Holding areas can be the same construction as the fences leading to the yard.
- Investing the least for the most return.



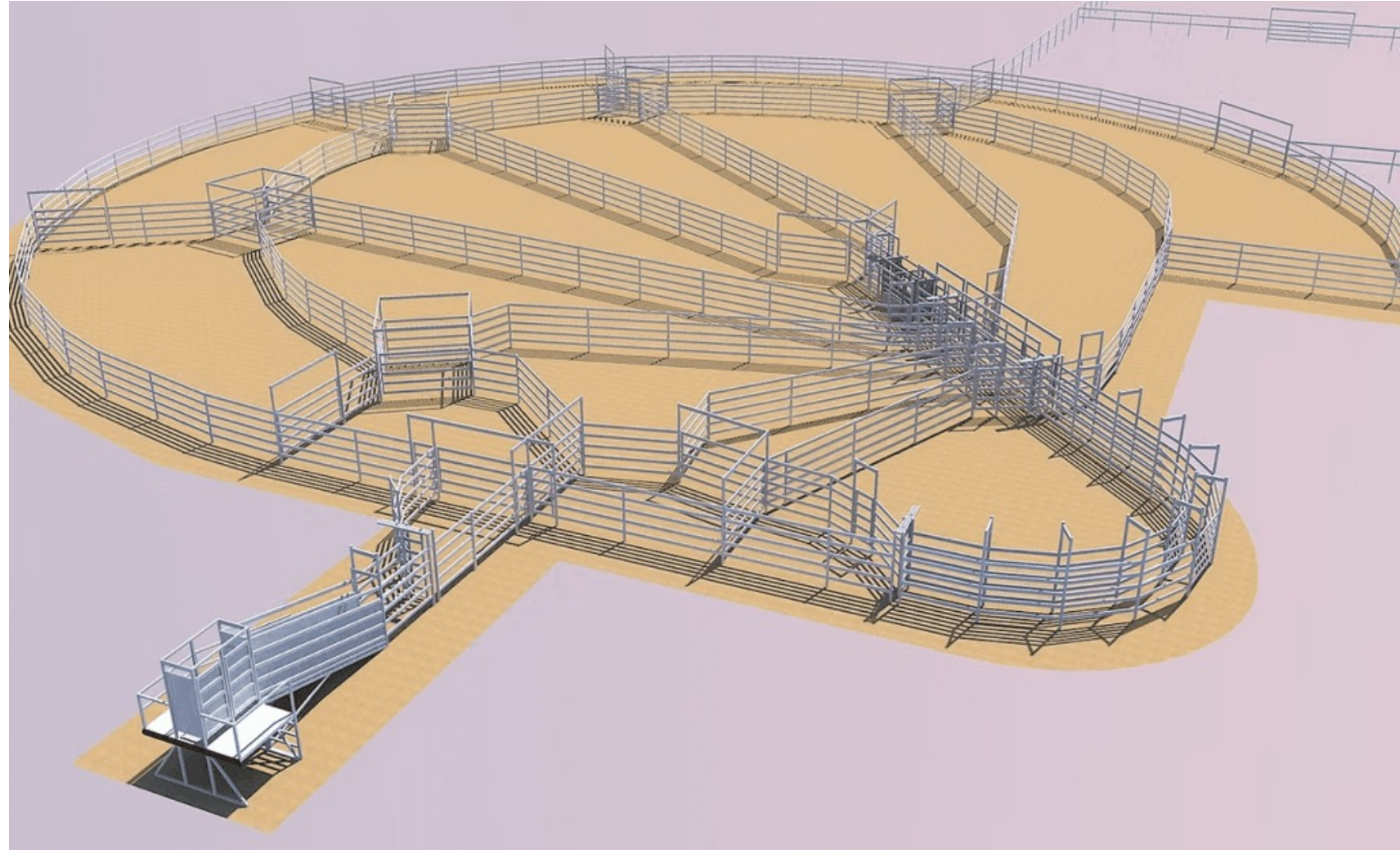
Put money into the parts that keep you safe

- Cattle raceway and crush should be strong, robust and easily operated.



Cattleyard Designs

- All commentary is analytical.



The 4 “F”s of Animal Behaviour

- Feeding
- Fleeing
- Fighting
- Reproduction



Animals are never really
'balanced' but rather
they are 'balancing'

Management
is about
movement.....



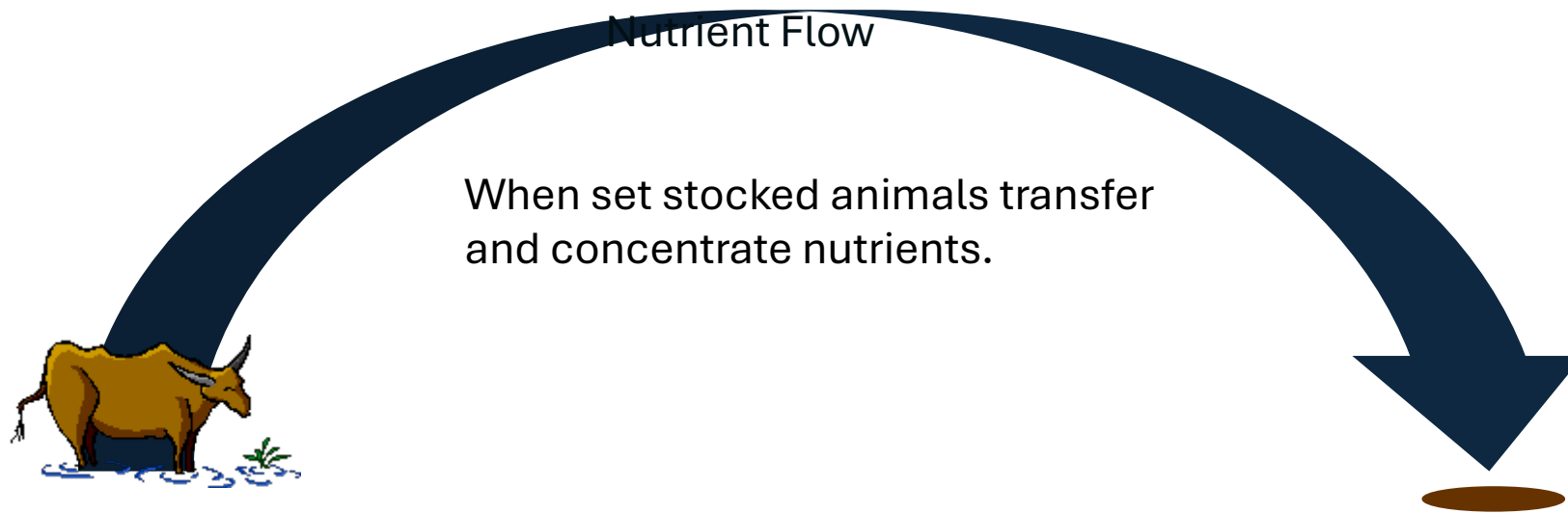
“Grazing” has a triple bottom line

- There are 3 main effects of many different levels of intensity
 - Consumption
 - Impaction
 - Deposition



Animals Shift Nutrients

- Animals move many more nutrients around the landscape than they remove from the landscape.
- Animals are moving large amounts of nutrients every day of the year. How they are managed determines whether the nutrients are spread back to the plants or concentrated away from them.



Grazing IS a complex technique

- You can select for animals that occupy different areas of the landscape to shift the grazing effects.
- Animals are a tool that can be used to regenerate or destroy grasslands- it's how you use them that determines the result.
- Stockmanship is a key point. Even if you have all the other elements of grazing functioning correctly low levels of Stress can mean that the animals spread themselves unevenly across the landscape.



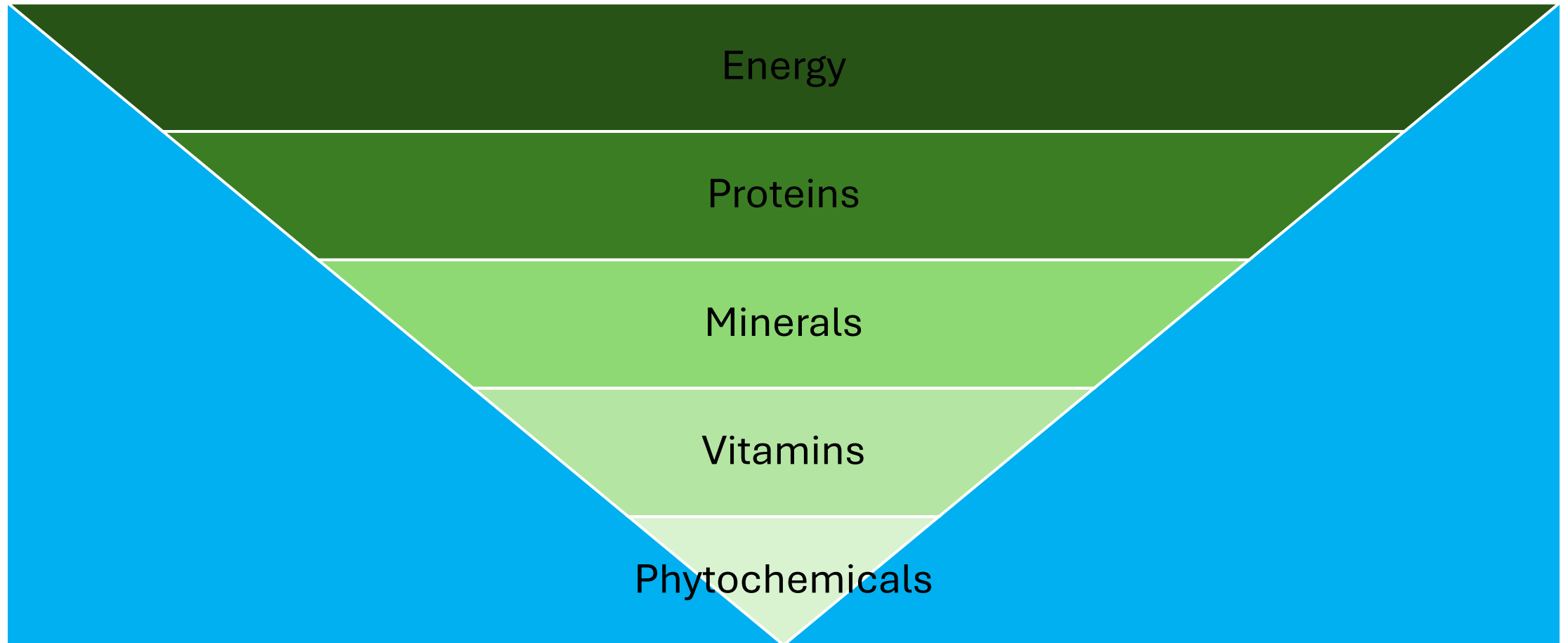
Why would
animals eat this at
different levels?





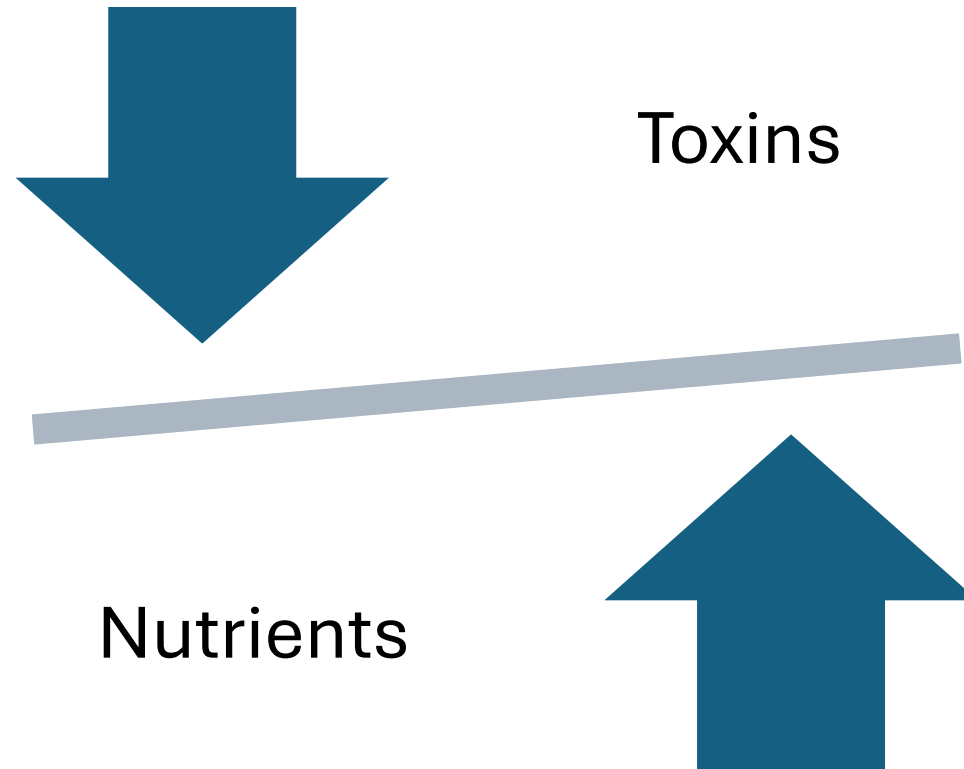
Selective grazing extends to the micro level

What Nutrients do they need?



Nutrients Vs. Toxins

- All plants have both.
- Animals balance their requirements by juggling these needs.



The feed value of any plant in your grasslands depends upon...

Voluntary Feed Intake

and

Nutritive Value.

We can influence Voluntary Feed Intake by actively de-stressing our animals.



Palatable Or Not?

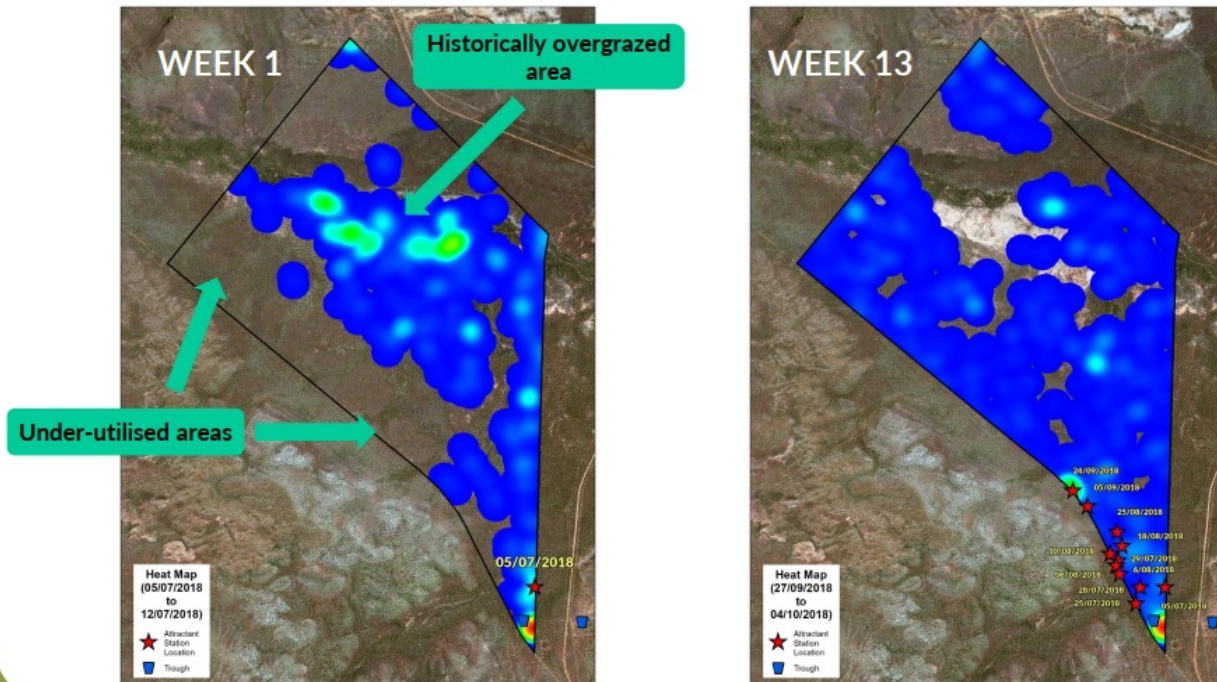
- A Spear Grass (Stipa) showing several different utilisation levels of the same type of grass.
- Animals will often choose plants of 'low' value.



Self Herding

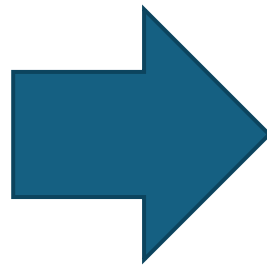
- Level 4 livestock behavioural work.
- Actively changing what animals eat, where they go, where they stay and how they impact soils.

GPS “heat maps” show that Self Herding techniques have influenced grazing patterns



The bigger picture- toward a: Win-Win-Win

- Animal behaviours are the key link toward combined future results of increased production and increased landscape function.
- Livestock are the modern ‘Megafauna’ that link us back to the first Australians around 47,000 years ago.
- Animals are a tool that is spread across the landscape- we can choose to guide that or not.



Keep them moving.....repairing land as they go

Self Herding- impacting underutilized areas



Some Further Viewing and Reading.....

- 'Regenerative Farming' channel on Youtube.
- <https://www.youtube.com/watch?v=cqWQxr8Ze18>
- Sheep eating weeds
- http://www.youtube.com/watch?v=K22T_Bje_K4
- Cattle eating weeds
- http://www.youtube.com/watch?v=MYbA_NFKBc4
- MLA study on sheep feedlots showing increase in daily gain of 33%
- <http://www.mla.com.au/Research-and-development/Final-report-details?projectid=15533>
- Zero Shrinkage from livestock transport
- <https://www.mla.com.au/news-and-events/industry-news/why-stress-free-stock-handling-is-key-to-boosting-profit/>
- Grazing With Self Herding- MLA report
- <https://www.mla.com.au/research-and-development/reports/2019/grazing-with-self-herding/#:~:text=Key%20findings,%2Dused%20paddocks%20by%2050%25>
- SFS sheep going into a shearing shed willingly
- https://www.youtube.com/watch?v=FysC_ol81FE
- Woody weed eating with Pastoral Cattle in yards
- <https://www.youtube.com/watch?feature=endscreen&v=hcuvvcPha1PU&NR=1>
- Destressing station cattle at a feedlot
- <https://www.youtube.com/watch?v=eRtzRh9T-Y>

Thankyou!!

This webinar would not have happened without the support from:



natural resource
management program



Thanks goes to:

Sponsors

Organisers

Hosts

You

